

BIZERBA

_balanced information

III/116e



BIZERBA | MEAT AND BONE SAW

FK 32



→ FK 32 WITH REMOVABLE REMNANT HOLDER



→ EXCEPTIONALLY ROBUST STAND-MOUNTED
SAW MADE OF STAINLESS STEEL.



WHAT REALLY MAKES THE DIFFERENCE WHEN WORKING IN CONTINUOUS OPERATION EVERY DAY?

→ Latest technology – at your disposal

The high-performance FK 32 meat and bone saw is made of solid stainless steel. In daily professional use, it is unparalleled when it comes to efficiency, handling, safety and ease of cleaning. Using the FK 32 could not be simpler. The design of this heavy-duty stand-mounted saw is based on the latest research into modern and efficient working methods.

The FK 32 features approval according to EC Machinery Directive 89/392/EEC for safety and hygiene by an accredited testing laboratory pursuant to certificate of conformity no 93029 and GS test certificate no. 96061. The unit comes equipped as standard with the following: • Integral motor overload protection and restart lockout; • Motor brake; • Improved band and saw wheel cleaner system, easy to remove for cleaning;

• Stainless steel saw wheels • Detachable feed device combined with height-adjustable protective rail and saw blade guide; • Quick-action saw band tensioner via turn-handle-operated lock, combined with automatic tensioning/release of the band and saw wheel cleaner system; • Thickness adjustable between 10 and 300 mm, thickness dial can be detached and tilted aside; • Power switch integrated in membrane keypad (including indicator light); • Effortless cleaning by means of enclosed, large-area design; • Floor clearance approx. 40 cm (suitable for steam jet cleaning).

→ Optional equipment (additional charge)

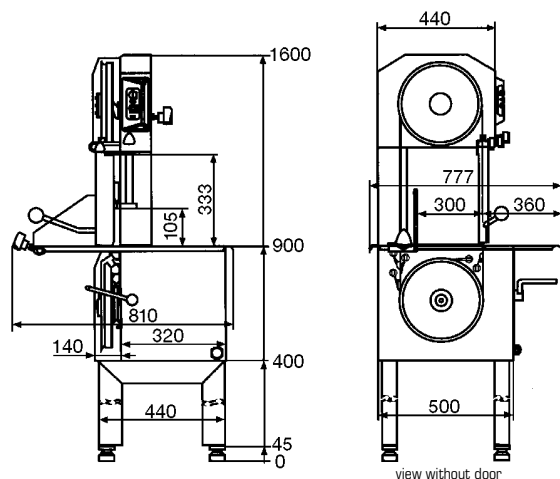
• Sliding table with removable remnant holder (343 x 366 mm); • Special saw and blade bands.

THE MAIN TECHNICAL SPECIFICATIONS



Current type	Voltage*)	Frequency	Amperage	Power consumption
	V	Hz	A	kW
→ 3-phase AC:	230/400	50	3,6	2,0

→ Dimensions in mm:



- Commodity width: min./max. 10–300 mm
- Wheel diameter: 315 mm
- Weight: approx. 110 kg, gross weight 150 kg
- Protection class: IP 55
- Installation area: (width x depth) 500 x 440 mm
- Outside dimensions: (width x depth x height) 777 x 800 x 1600 mm
- Saw Band speed: approx. 24.5 m/sec.
- Saw Band length: 2430 x 16 x 0.6 mm, division 6 mm
- Commodity height: max. 330 mm

*) Various voltages available depending on country-specific requirements
Special details available on request.

**** HIGH PERFORMANCE IN COMBINATION WITH EXCELLENT RELIABILITY. BIZERBA FK 32.**



BIZERBA
_balanced information